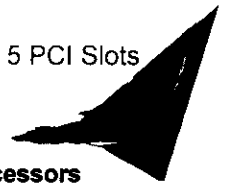
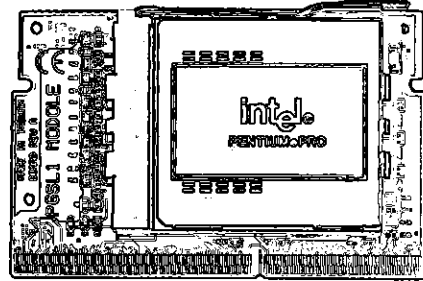


P6F40K-A5

Compact ATX Form Factor with 5 PCI Slots
Two-way IrDA Connectors



New Generation of Mainboards Support Intel Pentium® Pro/Pentium® II Processors

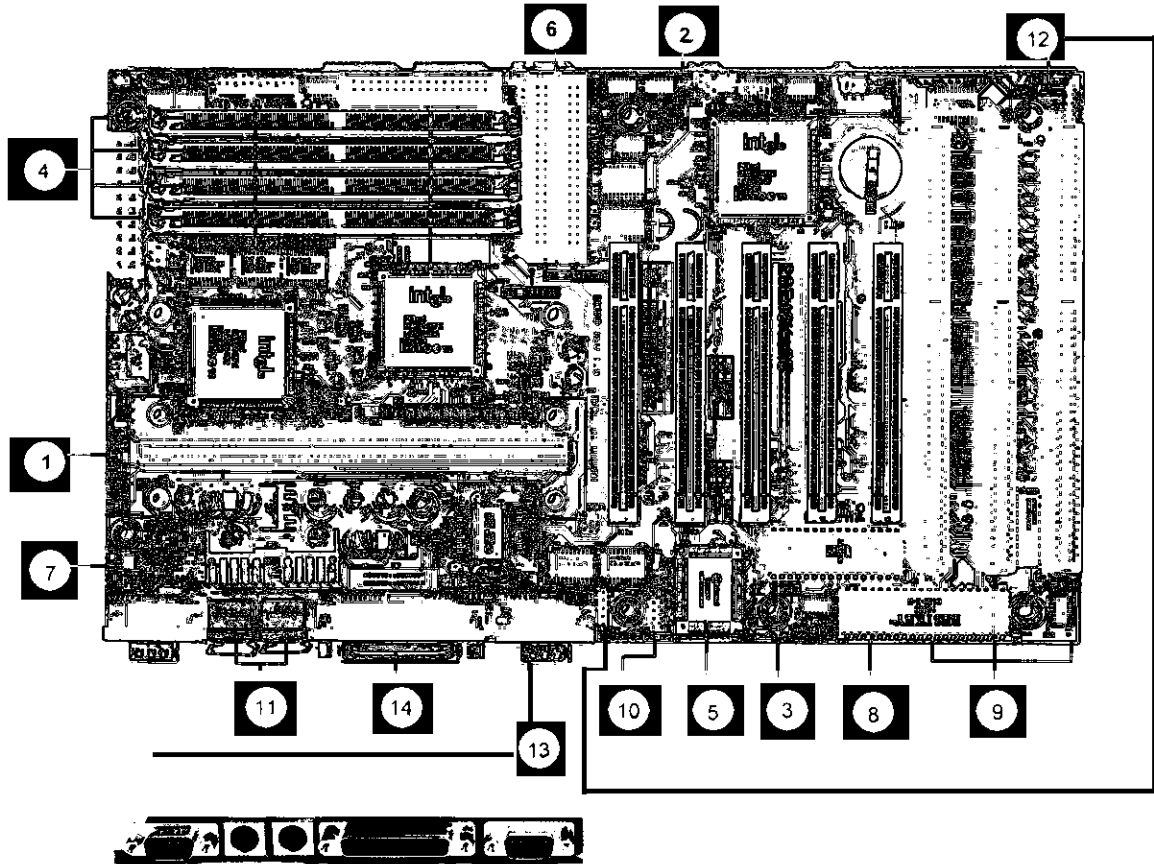


P6SL1

Pentium® Pro CPU module card with SOCKET 8 on board to fully utilize current Processor, with it, P6F40K-A5 is ready to work with you now and future

SLOT 1

for Pentium® II processor



- (1) Slot1 for Pentium® II processor
- (2) INTEL® 440FX Chipset
- (3) Flash EPROM
System & SCSI BIOS
- (4) 4*72-pin SIMM sockets
Max. 512MB system memory
Support EDO, FPM DRAM
- (5) Super I/O
- (6) PCI Bus Master IDE
PIO mode 3,4
DMA mode 2

- (7) Switching Voltage Regulator
Support 1.3V ~ 2.8V
- (8) 5 PCI Bus Master Slots
- (9) 3 ISA 16-bit slots
- (10) USB Header
- (11) PS/2 keyboard and mouse connectors
- (12) Two-way IrDA TX/RX header
- (13) COM1,COM2 9-pin male connectors
- (14) Parallel Port 25-pin female connector

P6F40K-A5 Compact ATX Form Factor with 5 PCI Slots

Two-way IrDA Connectors

New Generation of Mainboards Support Intel Pentium® Pro/Pentium® II Processors

P6F40K series is a new generation Pentium® Pro mainboards supporting correct Pentium® Pro Processors as well as upcoming Pentium® II with MMX technology. Products include ATX form factor design (P6F40K-A5), Baby AT design (P6F40K-B5) and a high-end server mainboard featuring built-in Ultra-Wide SCSI (P6F40K-WS). Besides, a processor module P6SL1 with SOCKET 8 is designed to support existing Pentium® Pro to work with P6F40K series mainboard.

P6F40K-A5 features compact ATX form factor with 5 PCI bus master slots and two-way IrDA connectors on both front and rear ends. All I/O connectors on ATX rear panel are designed to meet existing single height standard of ATX/ I/O shield is required.

P6F40K-A5 Specifications

Key Features	Compact ATX Form Factor with 5 PCI Slots Two-way IrDA Connectors
Processor	SLOT 1 support INTEL Pentium® II with MMX technology
Switching Voltage Regulator	Stepping voltage regulator from 1.3V ~ 2.8V to support V _{core} 3.3V to support level 2 cache on CPU Module
Chipset	INTEL® 440FX Chipset
BIOS	Award® PCI BIOS, support DMI, Green PC, Plug-and-Play Symbios® SCSI BIOS to support 53C810/860 Ultra SCSI TEKRAM user friendly, easy configuration features : <ul style="list-style-type: none"> ● Software auto switching between COM2 and IrDA ● Auto release IRQ12 while PS/2 mouse is disabled ● Boot option from FDD, IDE HDD/CD-ROM, SCSI devices
System Memory	4*72-pin SIMM sockets support up to 512MB Support EDO, FPM DRAM module (Parity, Non-parity, ECC)
On-board I/O Features	1*FDC Port Connector support up to 2.88MB 2*PCI Bus Master IDE, support LBA mode, PIO mode 3,4, DMA mode 2 USB header to support two USB ports, 1*3-pin CPU Fan connector Front panel connector: 1*IrDA 6-pin connector to support IrDA, ASK-IR Back panel connector : PS/2 keyboard, mouse, IrDA connectors 1*Parallel Port 25-pin D-type connector support ECP/EPP 2*High Speed Serial Port 9-pin D-type connector (16550)
Expansion Slots	5*32-bit PCI Bus Master slots, 3*ISA 16-bit slots
CMOS Battery	Coin-form replaceable battery
Power Connector	20 Pin Power connector with soft power on/off
Form Factory	Compact ATX Form factor (12" by 7")
Options	IrDA interface kit (Internal cable/bracket set and external module) USB connector kit
Accessories	One FDD cable, One IDE cable, User manual, Utility diskette

SYSTEM INTEGRATION OPTIONS

Storage controller	Video Adapter	IrDA Add-on
DC-390F : PCI Ultra Wide SCSI	M-230 : PCI VGA, Video Capture, TV Tuner	IR-210 : Serial Port Infrared Adapter
DC-390U : PCI Ultra SCSI	C-210 : PCI Video Capture	IR-220 : SIR Infrared Adapter
DC-390 : PCI Fast SCSI	VC-264VT2 : PCI VGA, Video Capture	IR-410 : FIR Infrared Adapter
DC-310U : Ultra SCSI (NCR 53C860)	V-264GT2 : PCI 3D VGA, TV out	IR-610 : Infrared to LAN Access Point



Tekram Technology CO., Ltd

HEAD OFFICE : 19F, No.75 Sec, 1, Hsin Tai Wu Rd., Hsi-Chih, Taipei Hsien, Taiwan TEL: 886-2-698-7777 FAX: 886-2-698-7799
 USA OFFICE/TEXAS : 11500 Metric Boulevard, Suite 190, Austin, TX, 78758, U. S. A. TEL: 1-(512)833-6550 FAX: 1-(512)833-7276
 USA OFFICE/CALIFORNIA : 46716 Fremont Blvd. Fremont CA 94538 U. S. A. TEL: 1-(510)353-6099 FAX: 1-(510)353-6089
 Web: <http://www.tekram.com> Email: sales@tekram.com.tw

Specification are subject to change without notice. All brands and product names are trademarks of their respective companies.